



Minimally Invasive
2 Incision RK
Back to the Future

J. E. "Jay" McDonald, M.D.

Minimal Radial Incision Tool Belt

- Diamond (Duotrac or Genesis')
- **Blade Gauge** or Blade Microscope
- McDonald Marker 4.0 4.5 5.0 ozone available from (Storz Instruments)
- (McDonald Marker) 1mm thick
- Corneal Pachymmeter
- No Proprietary Interest

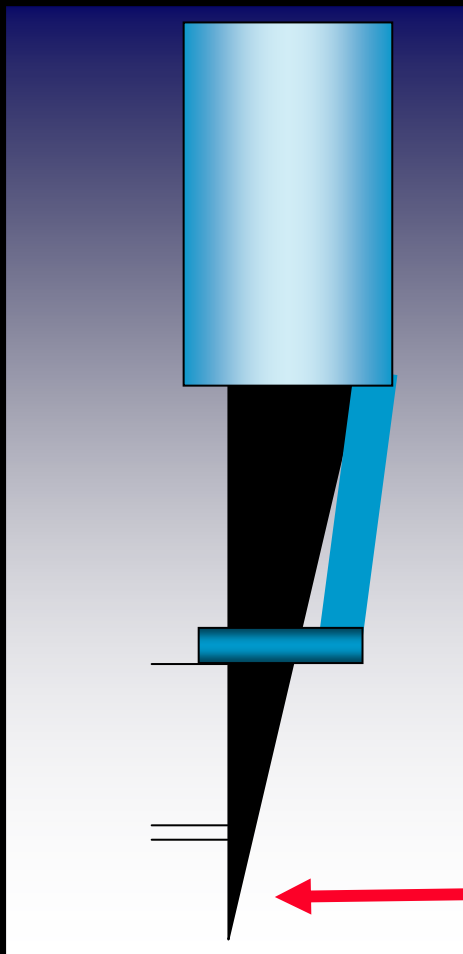
McDonald Lindstrom MRI

Minimal Relaxing Incision

- 4.0 to 5.0 (one marker does all)
- Take to 8.0 to 9mm OZ Only
- **AK not employed**
- **2 Cut On positive Cylinder Axis**

*Available from
Storz instruments*

Duo Trac Blade



- Preferable Duotrac
- Take it to 9mm OZ

Cuts only on peripheral side avoiding going into pupil space

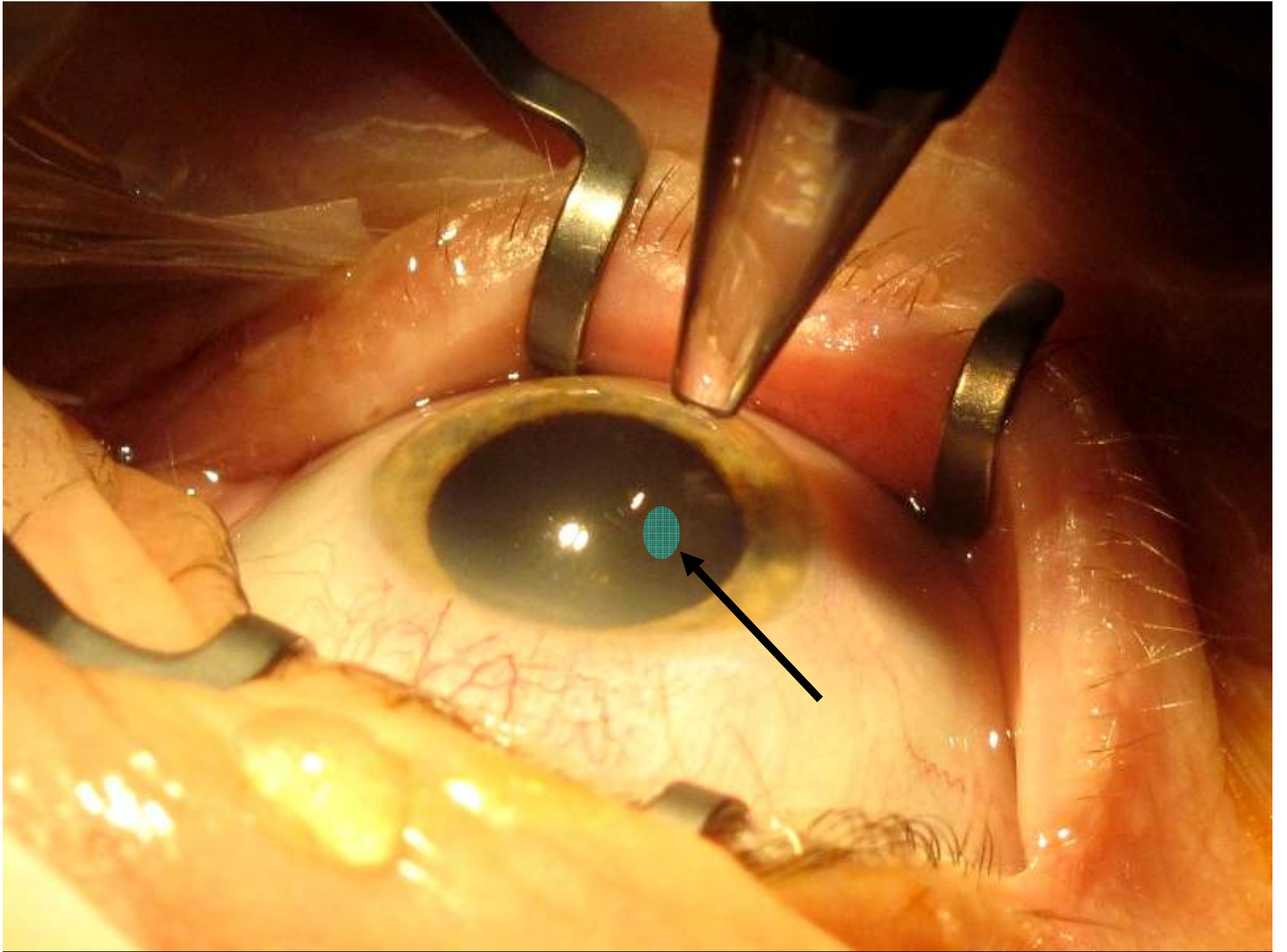
*Any Pach will work but prefer pach
over using orbscan or pentacam*



*Take Pach Reading over 4.00
Optical Zone*

Blade Setting

- **Set Blade Gauge or Micro Blade Gauge**
- **Measure over 4.0 oz**
- **Set Diamond at 100 % depth**
- **For Greatest Accuracy Measure each side 180 degrees apart**
- **Reset for each of Two Incisions**



McDonald/Lindstrom Simple Gram

- 2 incision 4.0 corrects 1.75 myopia
- 2 Incision 4.5 corrects 1.25 - 1.50 myopia
- 2 Incision 5.0 corrects .75 to 1.00 myopia

Over 70 add .50 under 50 subtract .50

Cut on Refractive Axis of 180 if no astigmatism

McDonald/Lindstrom “Simple Gram”

- 2 incision 4.0 corrects 1.0 astigmatism
- 2 Incision 4.5 corrects .75 astigmatism
- 2 Incision 5.0 corrects .50 astigmatism